

ORDINANCE 2004-20

AN ORDINANCE AMENDING THE OFFICIAL ZONING MAP OF TOOELE COUNTY; REZONING 323.46 ACRES IN SECTION 4, 5, AND 6 T2S, R11W SLB&M FROM MU-40 TO MG-EX.

**THE COUNTY LEGISLATIVE BODY OF THE COUNTY OF TOOELE ORDAINS
AS FOLLOWS:**

SECTION I - AMENDMENT. Having conducted a public hearing thereon and finding good cause therefor, and that the rezone request complies with the general plan, the official zoning map of Tooele County is hereby amended at the request of Envirocare by changing the zoning designation of 323.46 acres in Section 4, 5, and 6 of Township 2 South, Range 11 West, Salt Lake Base and Meridian, from MU-40 (Multiple Use District - 40) to MG-EX (Mining, quarry, sand and gravel excavation).

A map showing the area of the rezone is attached hereto and by this reference made a part hereof.

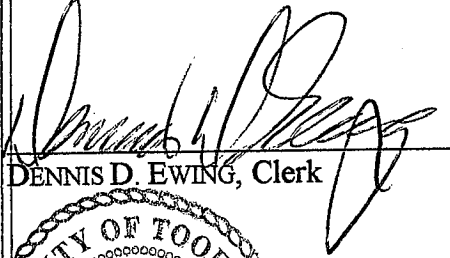
SECTION II - REPEALER. Ordinances in conflict herewith are hereby repealed to the extent of such conflict.

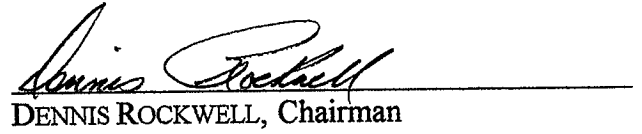
SECTION III - EFFECTIVE DATE. This ordinance shall take effect fifteen (15) days after its passage, provided the same has been published, with the name of the members voting for and against the same, for at least one publication in one issue of a newspaper published in and having general circulation in Tooele County.

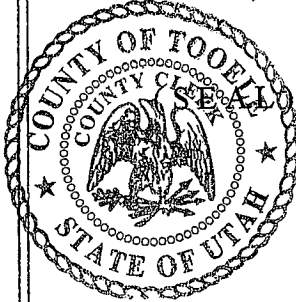
IN WITNESS WHEREOF, the legislative body of Tooele County passed, approved and enacted this ordinance this 3rd day of August 2004.

ATTEST:

TOOELE COUNTY COMMISSION:

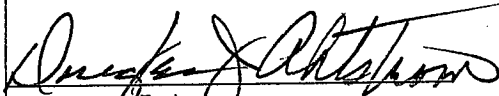

DENNIS D. EWING, Clerk

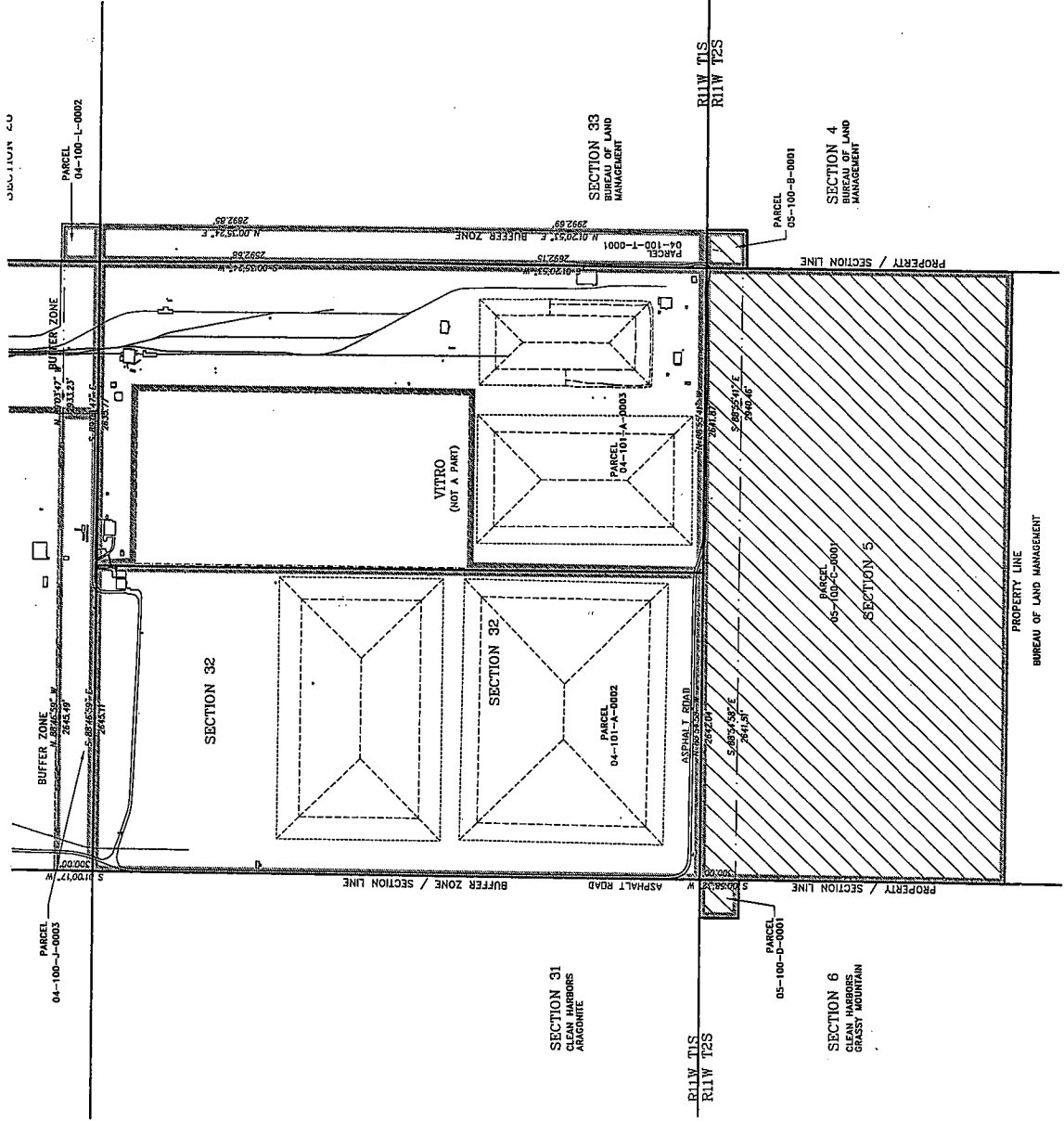

DENNIS ROCKWELL, Chairman



Commissioner Rockwell voted aye
Commissioner White voted aye
Commissioner Lawrence voted aye

APPROVED AS TO FORM:


DOUGLAS J. AHLSTROM
Tooele County Attorney



ENVIROCARE OF UTAH, INC. PARCEL DESCRIPTIONS

04-100-I-0001
THE W 1/2 OF THE W 1/2 OF THE W 1/2
OF SEC. 33, T1S, R11W, SL B&M - 40.00 AC;

04-101-A-0002
THE W 1/2 OF SEC. 32, T1S, R11W, SL B&M - 320.00 AC;

04-101-A-0003
THE E 1/2 EXCEPT THE PPTY BEGINNING 1120.32 W AND
328.49 S OF NE COR OF SEC 32, 1503.72 W, 2880.50
S, 1503.72 E, 2880.50 N TO POB, OF SEC. 32, T1S,
R11W, SL B&M - 220.56 AC;

05-100-R-0001
THE NW 1/4 OF THE NW 1/4 OF THE NW 1/4
OF SEC. 4, T2S, R11W, SL B&M - 2.50 AC;

05-100-C-0001
THE N 1/2 OF SEC. 5, T2S, R11W, SL B&M - 318.46 AC;

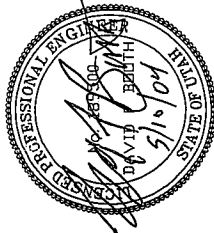
05-100-D-0001
THE NE 1/4 OF THE NE 1/4 OF THE NE 1/4
OF SEC. 6, T2S, R11W, SL B&M - 2.50 AC.

Envirocare 300' Buffer Zone Perimeter-Description

Beginning at a point on the Southwest Corner of
Section 32, Township 1 South, Range 11 West, Salt
Lake Base and Meridian (a found brass cap
monument labeled "Clive"); and running thence
South 00°58'32" West, 300.00 feet; thence South
88°54'58" East, 2841.51 feet; thence South 88°55'41"
East, 2940.46 feet; thence North 01°20'53" East,
2992.69 feet; thence North 00°35'24" East, 2892.85
feet; thence North 88°03'47" West, 2933.23 feet;
thence North 88°03'47" West, 2645.49 feet; thence
South 01°00'41" East, 300.00 feet; thence South
88°04'59" East, 2845.11 feet to the North Quarter Corner of
said Section 32; thence South 88°03'47" East,
2835.77 feet to the Northeast Corner of said Section
32; thence South 00°35'24" West, 2892.85 feet to the
East Quarter Corner of said Section 32; South
01°20'53" West, 2892.15 feet to the Southeast Corner
of said Section 32; thence North 88°05'41" West,
2841.87 feet to the South Quarter Corner of said
Section 32; thence North 88°54'58" West, 2842.04
feet to the above mentioned Southeast Corner of
said Section 32 and the point of beginning.

Contains: 113.28 acres

LAND PROPOSED TO BE
CHANGED TO ZONE MG-EX



05/10/2004 OFFICE ZONING SUBMITTAL		ENVIROCARE 'CLIVE' FACILITY		05/05/04
DATE		SUBMITTER		04044-C01
DESCRIPTION OF CHANGE		PROJECT LOCATION MAP		
		CLIVE, UTAH		
		SEC 4 & 5 RE-ZONING SUBMITTAL		
		K.BROWN		
		D. BOOTH		
		ENVIROCARE OF UTAH, INC.		
		THE SAFE ALTERNATIVE		

